



# TECHNOLOGY

## NATIONAL RANKINGS

**TOP 20** TECH CITY FOR IT JOBS  
— CompTIA, 2022

**TOP 25** UP-AND-COMING TECH MARKET  
— CBRE, 2024

## PRO-BUSINESS ENVIRONMENT



The State recently passed legislation to lower the corporate income tax to 5.5% and personal income tax to 3.9% by 2026.



Iowa offers a refundable research and development tax credit of 6.5% for qualifying research expenditures.



The cost of doing business is 12% lower than the national average.  
— Moody's Analytics



Iowa offers several innovation funding and tax credit programs that are especially helpful for technology companies.

## KEY TECHNOLOGY CLUSTERS

- Advanced Manufacturing
- Animal and Plant Genetics
- Data Centers
- Digital Media and Marketing
- FinTech
- InsurTech
- Digital and Precision Ag Tech
- Process Control Systems

## IDEAL LIVING ENVIRONMENT



A 21-minute average commute.  
— U.S. Census Bureau



The cost of living is typically 10-12% below the national average.  
— The Council for Community and Economic Research

## RECENT EXPANSIONS

### OPENLOOP

OpenLoop is a telehealth solutions provider focused on connecting clinicians who offer telehealth services to providers who want to increase their offerings.

### JOHN DEERE INTELLIGENT SOLUTIONS GROUP

Intelligent Solutions Group (ISG) creates software for precision agriculture and is the company's premier IT development department.

### COVIANCE

Coviance is a fintech company that is making the home equity lending process simpler, faster and more scalable through its cloud-based platform.

### LANDUS INNOVATION CONNECTOR

Landus is a farmer-owned cooperative with a multi-year agreement with Google to seek ground-breaking solutions for a more sustainable and profitable farming ecosystem.

### POWERPOLLEN

PowerPollen has engineered new technologies that improve seed production and increase agricultural productivity by enabling more effective cross-pollination.

DSM ACCELERATORS



The Greater Des Moines Partnership's **Scale DSM Business Accelerator** helps businesses gain access to knowledge, management know-how and networks.



The **Cultivo Global Ag Innovation Program** is a unique opportunity hosted by America's Cultivation Corridor for global scaleup companies preparing to enter the U.S. ag, food or bioscience market.



**BrokerTech Ventures** is an innovation hub for startups backed by nine super-regional, privately held brokerage firms.



The **Global Insurance Accelerator** is a mentor-driven accelerator designed to foster innovation in the insurance industry.



**Goldman Sachs 10,000 Small Businesses** allows small business owners to learn, grow, and connect with business peers and mentors. Over 300 Iowa business owner alumni are in this network.



The **Startup Collaborator** was created by John Deere to enhance precision technology in its agriculture and construction equipment through collaboration with startups.



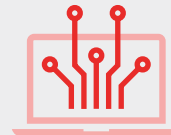
Master the startup process with the premier statewide **Venture School**, an innovative training program focused on real-world experimentation, customer discovery, and Lean LaunchPad methodologies.

QUALIFIED WORKFORCE

Estimated job training reimbursement of over

**\$10,000**

per new tech-based employee based on increased payroll.



2.1% average annual growth in high-tech industries over the past 10 years.

— JobsEQ



40.9% of the population age 25 – 64 hold a bachelor's degree or higher.

— JobsEQ

**36,759**

workers in high-tech industries.

— JobsEQ



72,000 students in higher education in the region.

— National Center for Education Statistics

SID JUWARKER

Vice President of Economic Development p: (515) 286-4964 e: sjuwarker@DSMpartnership.com

growDSMUSA.com | dataDSMUSA.com

